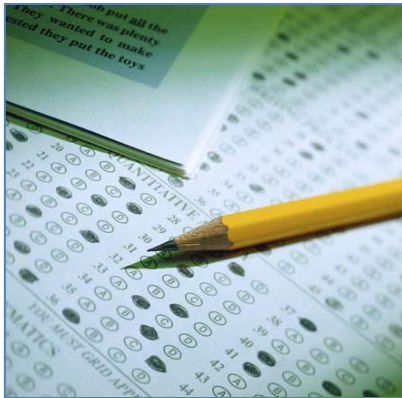




SuperStar Study Skills Classes



Taking Multiple Choice Tests

Multiple Choice Tests:

Multiple choice items include a statement or question followed by a list of possible answers identified by a letter. Typically the student responds by circling the letter of the correct item on the test or filling in the letter on an answer sheet. There are generally two types of items on multiple choice tests.

1. A statement with a missing part anywhere in the statement. In these items, you must circle the letter that represents the choice that correctly completes the statement.
 - a. Example: *The sixteenth president of the United States, _____, was known for his Gettysburg address delivered during the Civil War.*
 - A. Thomas Jefferson
 - B. Abraham Lincoln
 - C. George Washington
 - D. Theodore Roosevelt

Circling "B" indicates the correct answer.

2. A questions followed by several possible answer choices.
 - a. Example: *In what year did World War II end?*
 - A. 1918
 - B. 1939
 - C. 1940
 - D. 1945
 - E. None of the above

Circling "D" indicates the correct answer. If none of these dates were correct, "E" would be the correct answer.

Here are some helpful guidelines when taking multiple choice tests.

1. Underline important words in the test item such as "always", "never", "usually", "all of the above", "none of the above", "Choose the best answer" or any other words or phrases that will help you understand the item. This will help you focus on crucial information needed to make a correct choice.
2. Come up with the answer in your head before looking at the possible answers. This will make it less likely for the choices to confuse you or throw you off.
3. Read all the answer choices carefully before selecting one. Don't assume that the first choice that looks correct is the most appropriate answer.
4. Cross out answer choices you are certain are not correct. This helps you narrow down choice options.
5. Look for two answer choices that are opposites. Often, the correct answer is found in one of these choices.
6. Avoid changing your initial answer unless you are sure another answer is correct. Your first response is often the correct answer.
7. If you do not know the answer to a question with an "All of the above" choice and you see at least two correct statements, then "All of the above" is more likely to be the answer.
8. Although this is not always the case, an item containing the most information is more likely to be the correct answer.
9. Look for hints about the correct answer in other items on the test. You may find the correct answer in another item on the test.
10. Make the letters legible and neat that indicate your answers. Be sure that your "b's" do not look like "d's" or the item may be scored incorrectly.